

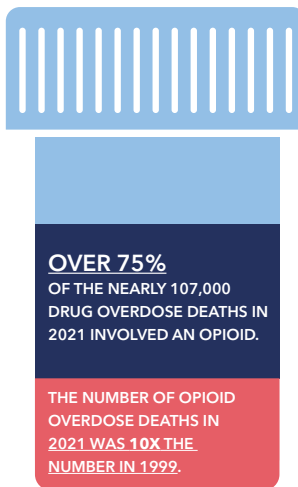
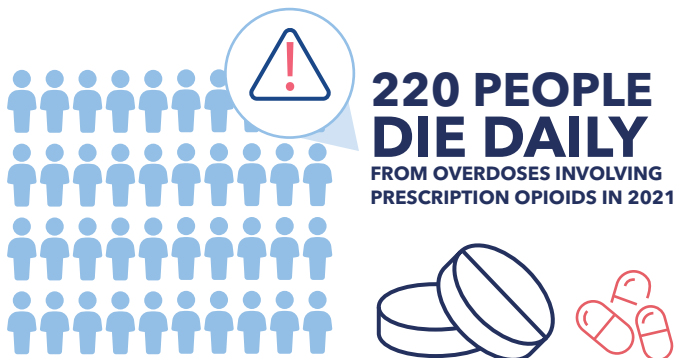
# Improve Performance on New CMS Opioid Measures

## Manage member risk related to COB, Poly-ACH and Poly-CNS

More than 3 million Medicare enrollees are prescribed opioids alongside benzodiazepines—a drug combination putting elderly adults at risk of falls, cognitive decline, and even death. Three important Part D measures within the CMS Star Ratings system (COB, Poly-ACH and Poly-CNS) challenge MA plans to address high-risk prescriptions and polypharmacy in their member population.

AdhereHealth provides the proprietary data analytics and tech-enabled services that help plans identify and resolve potentially dangerous and concurrent medication usage in MA plan members. As a trusted partner, we help plans improve safety and positive health outcomes, as well as performance, on these three measures to improve overall Star Ratings.

## The Need for Improved High-Risk Prescription Management



- Over 90% of benzodiazepine-involved overdose deaths also involved opioids from January 2019 - June 2020
- Rates of benzodiazepine-involved overdose ED visits increased nearly 24% from 2019 - 2020

— CDC, 2022

## New CMS Opioid and Benzodiazepine Star Ratings Measures

**Star Ratings Improvement: Concurrent Use of Opioids and Benzodiazepines (COB):** the percentage of individuals  $\geq 18$  years of age with concurrent use of prescription opioids and benzodiazepines.

**Polypharmacy Use of Multiple Anticholinergic Medications in Older Adults (Poly-ACH):** the percentage of individuals  $\geq 65$  years of age with concurrent use of two or more unique anticholinergic medications.

**Polypharmacy Use of Multiple Central Nervous System Active Medications in Older Adults (Poly-CNS):** the percentage of individuals  $\geq 65$  years of age with concurrent use of three or more unique central nervous system active medications.

## How does it work?

The Adhere Platform leverages unique patient relationship management (PRM) technology featuring holistic patient profiles that empower pharmacists to best engage both patients and prescribing physicians. It also provides comprehensive performance management for continuous program effectiveness.



- Daily surveillance analytics identify and target at-risk members
- Ongoing data ingestion tracks healthcare events and high-risk medication prescriptions



- Nationwide team of pharmacists engage with members
- Clinical intervention with prescribing provider to recommend alternate prescriptions



- Provider Performance and Multiple Program Metrics dashboards to monitor program for ongoing effectiveness
- Improved safety, health outcomes and patient experience

## Unrivaled Comprehensive Medication Management Advantages

AdhereHealth offers the following to drive member health and safety, and improved Star Ratings:



**Regular prescription claims monitoring**—daily and weekly data ingestion allows plans to track at-risk members who may crop up throughout the measurement year, either due to a healthcare event, new high-risk prescription or potential drug interactions.



**Empowered pharmacists**—whether the MA plan utilizes an in-house team of clinicians or partners with an outsourced network, access to comprehensive data is critical to support pharmacists in the most informed and efficient member interventions. AdhereHealth provides our unique data analytics platform as software-as-a-service (SaaS) or technology-enabled telepharmacy with access to our nationwide team of directly employed clinicians.



**Provider-first approach**—connection to prescribing providers allows clinicians to address the needs of at-risk members to prompt member engagement and transition to safer alternative prescriptions.



**Powerful dashboard metrics**—robust dashboard reporting features allow plans and medical directors to track key program functions and maintain program efficiency and effectiveness, for ongoing health and safety of high-risk members.

**Get started managing member risks associated with opioids and concurrent prescriptions, to improve member safety and maintain high performance on these related Star Ratings measures.**

**Contact AdhereHealth today** to learn more about our proven medication management strategies.